

YOUR
instruction
TO START
THE CHEAT

CHEATSELLER.COM



Main *stages*

01

Remove unnecessary programs

Antivirus AVAST, Norton, ESET 32, McAfee, AVG, Avira and etc.

02

BIOS settings

We will talk about this second.

03

Disable windows protection

Then, we will talk about this.

04

Install all libraries

After that we will talk about this.

05

Check you windows

We will also talk about this.

06

We read the description

And we will talk about this last.

01

We will talk about

Remove unnecessary programs

We go to “Remove Programs” and make sure that we **DO NOT INSTALL:**
Antivirus AVAST, Norton, ESET 32, McAfee, AVG, Avira and others
Conflicting Programs Faceit, ESEA, Riot Vanguard, Oracle Virtual Box
Disable Hyper-V
If installed - **DELETE !!!** Just turning it off won't work.

Step 01

CHEATSELLER

Программы и компоненты

Панель управления — домашняя страница

Удаление или изменение программы

Для удаления программы выберите ее в списке и щелкните "Удалить", "Изменить" или "Восстановить".

Имя	Издатель	Установл...	Размер	Версия
Microsoft Edge	Корпорация Майкрософт	11.02.2023		110.0.1587.41
Microsoft Office профессиональный плюс 2013	Microsoft Corporation	05.02.2023		15.0.4569.1506
Microsoft Update Health Tools	Microsoft Corporation	27.01.2023	1,02 MB	3.70.0.0
Microsoft Visual C++ 2005 Redistributable - x86 8.0.61000	Microsoft Corporation	01.12.2022	6,92 MB	8.0.61000
Microsoft Visual C++ 2005 Redistributable - x86 8.0.61001	Microsoft Corporation	01.12.2022	4,94 MB	8.0.61001
Microsoft Visual C++ 2008 Redistributable - x64 9.0.30729.6161	Microsoft Corporation	01.12.2022	13,2 MB	9.0.30729.6161
Microsoft Visual C++ 2008 Redistributable - x86 9.0.30729.6161	Microsoft Corporation	01.12.2022	10,1 MB	9.0.30729.6161
Microsoft Visual C++ 2010 Redistributable - x64 10.0.40219	Microsoft Corporation	12.02.2023	18,2 MB	10.0.40219
Microsoft Visual C++ 2010 Redistributable - x86 10.0.40219	Microsoft Corporation	12.02.2023	14,9 MB	10.0.40219
Microsoft Visual C++ 2012 Redistributable (x64) - 11.0.61030	Корпорация Майкрософт	01.12.2022	20,5 MB	11.0.61030.0
Microsoft Visual C++ 2012 Redistributable (x86) - 11.0.61030	Корпорация Майкрософт	01.12.2022	17,3 MB	11.0.61030.0
Microsoft Visual C++ 2013 Redistributable (x64) - 12.0.40664	Корпорация Майкрософт	01.12.2022	20,5 MB	12.0.40664.0
Microsoft Visual C++ 2013 Redistributable (x86) - 12.0.40664	Корпорация Майкрософт	01.12.2022	17,1 MB	12.0.40664.0

Установленные программы | Полный размер: 36,8 Гб
Установлено программ: 46



02

We will talk about

BIOS settings

1. Check that the BIOS mode is UEFI
2. Turn off SECURE BOOT
3. AMD CPU fTPM - must also be disabled
4. Virtualization must be enabled

All information on how to do this can be found in Google or Yandex search engines

Step 02





03

We will talk about

Disable windows protection

Disable windows security, firewall and
smartscreen

Step 03



Virus & threat protection settings

View and update Virus & threat protection settings for Microsoft Defender Antivirus.

Real-time protection

Locates and stops malware from installing or running on your device. You can turn off this setting for a short time before it turns back on automatically.

Real-time protection is off, leaving your device vulnerable.

Off

Cloud-delivered protection

Provides increased and faster protection with access to the latest protection data in the cloud. Works best with Automatic sample submission turned on.

Cloud-delivered protection is off. Your device may be vulnerable.

Off

Automatic sample submission

Send sample files to Microsoft to help protect you and others from potential threats. We'll prompt you if the file we need is likely to contain personal information.

Automatic sample submission is off. Your device may be vulnerable.

Off

Submit a sample manually

Reputation-based protection

These settings protect your device from malicious or potentially unwanted apps, files, and websites.

This setting is managed by your administrator.

Check apps and files

Microsoft Defender SmartScreen helps protect your device by checking for unrecognized apps and files from the web.

Off

SmartScreen for Microsoft Edge

Microsoft Defender SmartScreen helps protect your device from malicious sites and downloads.

Off

SmartScreen for Microsoft Store apps

Microsoft Defender SmartScreen protects your device by checking web content that Microsoft Store apps use.

Off

Exploit protection

See the Exploit protection settings for your system and programs. You can customize the settings you want.

System settings Program settings

Control flow guard (CFG)

Ensures control flow integrity for indirect calls.

Off by default

This change requires you to restart your device.

Data Execution Prevention (DEP)

Prevents code from being run from data-only memory pages.

Off by default

This change requires you to restart your device.

Force randomization for images (Mandatory ASLR)

Force relocation of images not compiled with /DYNAMICBASE.

Use default (Off)

Randomize memory allocations (Bottom-up ASLR)

Randomize locations for virtual memory allocations.

Off by default

This change requires you to restart your device.

High-entropy ASLR

Increase variability when using Randomize memory allocations (Bottom-up ASLR).

Use default (On)

Export settings

Windows Security

- Home
- Virus & threat protection
- Account protection
- Firewall & network protection
- App & browser control
- Device security
- Device performance & health
- Family options

Firewall & network protection

Who and what can access your networks.

Domain network

Firewall is off.

Turn on

Private network

Firewall is off.

Turn on

Public network (active)

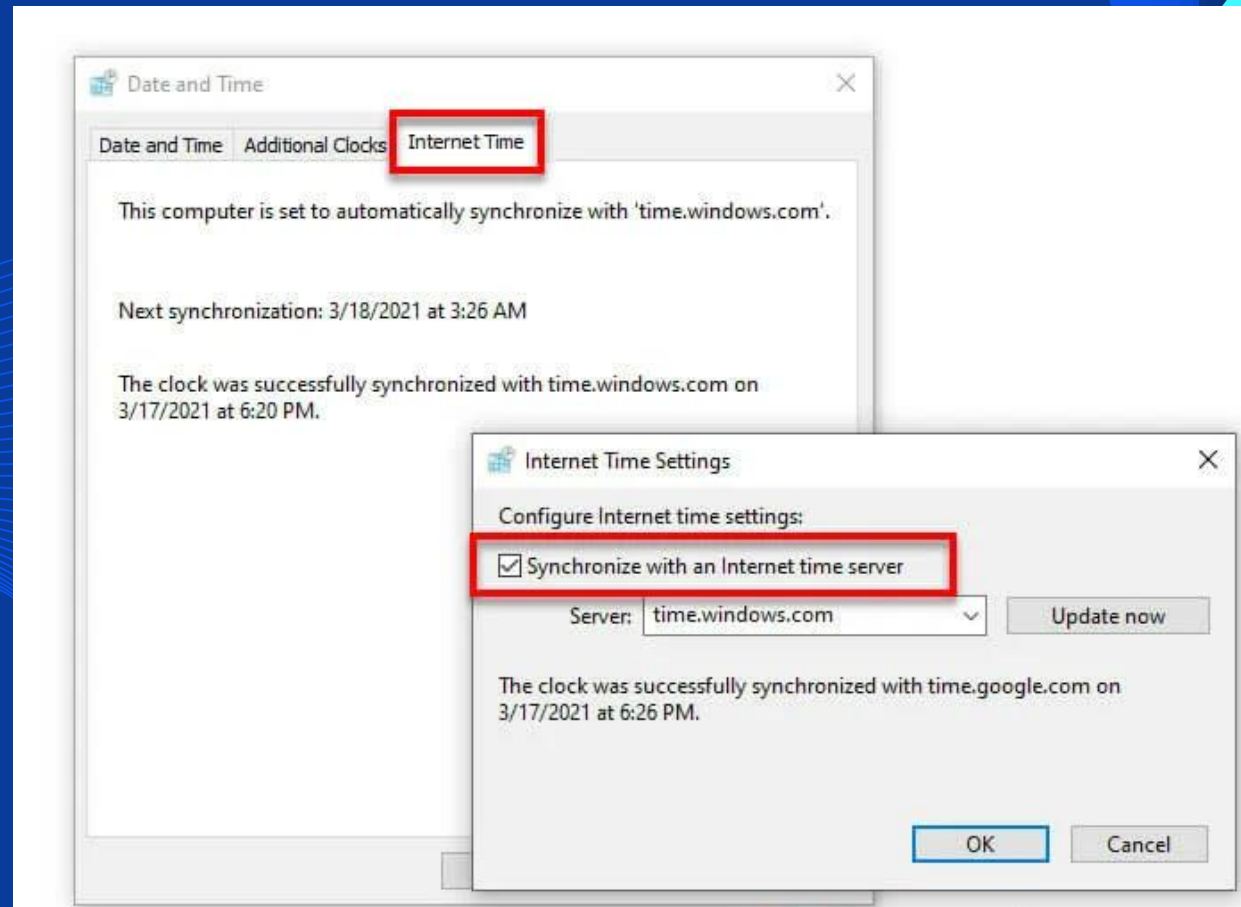
Firewall is off.

Turn on

disable settings change notifications

Step 03

Make sure internet time synchronization is enabled.



04

We will talk about
Install all libraries

Download and setup

THIS

05

We will talk about *Check you windows*

Most cheats work on ORIGINAL windows 10(11) pro!
Chance to run software on corporate/home/lite/repack
windows -practically zero.



06

We will talk about

We read the description

Read carefully the cheat description and configuration

Step 06

Easy to use and configure. ZEROHOOK LITE is designed with user needs in mind and provides an easy and intuitive interface. You can quickly customize the cheat to suit your needs and requirements, even if you have no experience playing with cheats. ZEROHOOK LITE provides a wide range of functions and features that allow you to adapt it to your unique situation. DOES NOT SUPPORT GIGABATE MOTHERBOARDS!!

Windows:

Windows 10 1909-22h2 all CPU /
Windows 11 only for Intel CPU




Intel & AMD

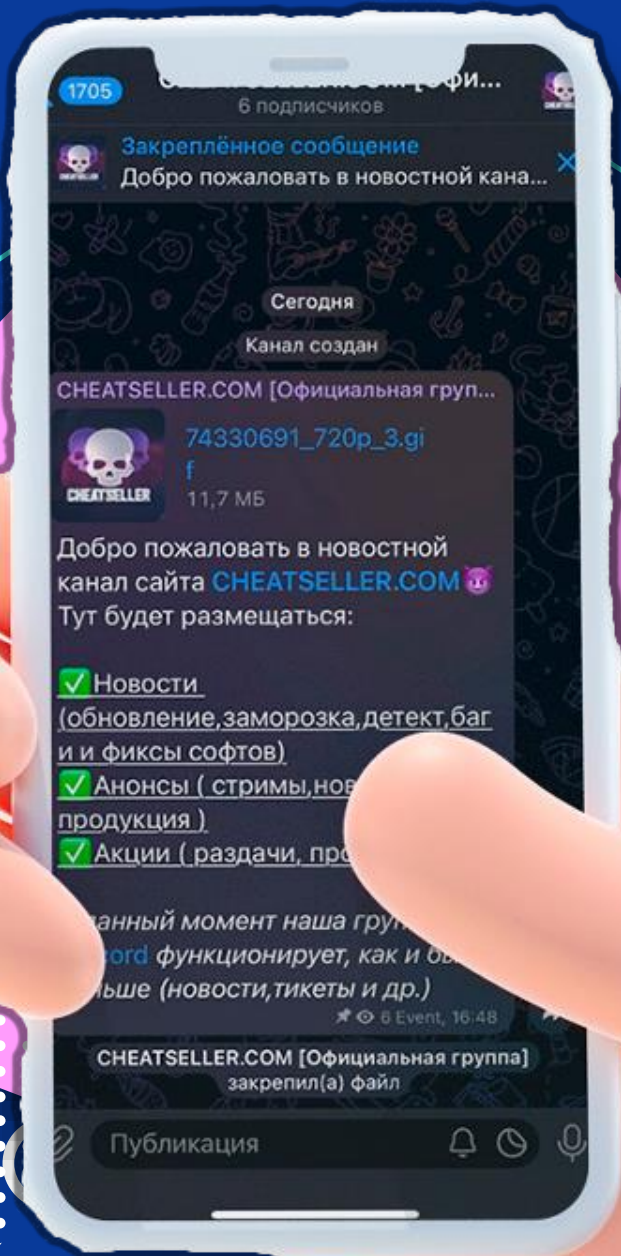
Game mode:
window borderless

Spoofers: built-in

Nvidia & AMD

Check status

	CR3 Security: ★★★★★ Functional: ★★★	from 7.5\$ Operational Windows 10
	NEVERWIN smg Security: ★★ Functional: ★★★★★	from 7.5\$ Testing Windows 10
	RADAR HAVAL Security: ★★★★★ Functional: ★	from 6\$ Operational Windows 10 / Windows 11



Follow the news in *Discord* *Telegram*

[DISCORD LINK](#)
[TELEGRAM LINK](#)